

The Wooden Shelf

Designed by Lucien Gummy, ECAL

The Wooden Shelf was designed by Swiss carpenter and designer Lucien Gummy during his studies at ECAL, Lausanne. The award-winning flat-pack shelving system is made of solid oak with a matt lacquer finish. The shelf has no mechanical fixings as the design uses a dovetailing detail to join together its vertical and horizontal components. The beauty of the piece lies both in the simplicity of its construction as well as its aesthetic.

The Wooden Shelf
Designed by Lucien Gummy, ECAL



WH

The Wooden Shelf
Designed by Lucien Gummy, ECAL



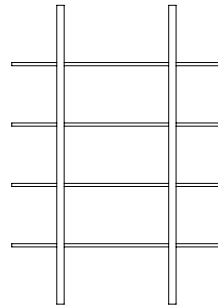
WH

The Wooden Shelf
Designed by Lucien Gummy, ECAL

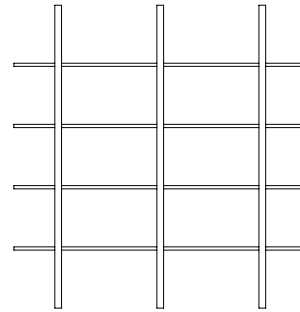


The Wooden Shelf

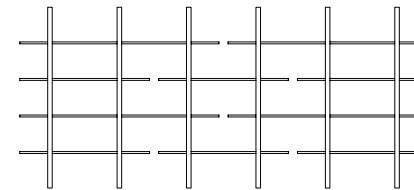
Designed by Lucien Gummy, ECAL



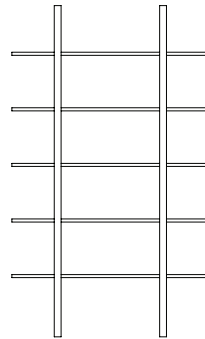
WS24
L120 × D38,3 × H177,6 cm



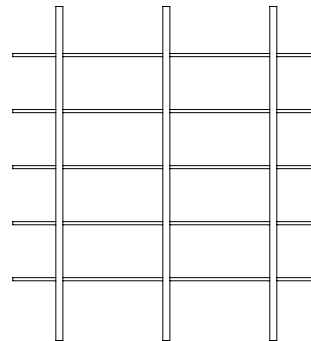
WS34
L184,2 × D38,3 × H177,6 cm



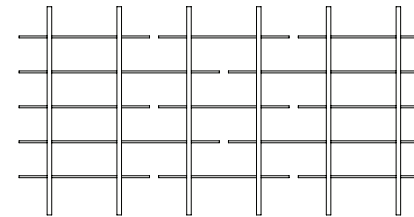
WS64
D38,3 × L376,8 × H177,6 cm



WS25
L120 × D38,3 × H213,5 cm



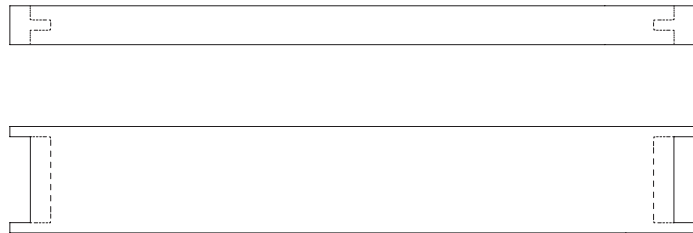
WS35
L184,2 × D38,3 × H213,5 cm



WS65
L376,8 × D38,3 × H213,5 cm

Material: Solid oak
Finish: Matt lacquered oak
Launched in 2014

The Wooden Shelf, Bookend
Designed by Lucien Gummy, ECAL



Set of 2

Material: Solid oak

Finish: Matt lacquered oak

Launched in 2014

